



Volume 1, Issue 3

March 16, 2013

# ASPE CHAPTER 7 NEWSLETTER

## OUR NEXT MEETING

- THURSDAY—MAR. 21, 2013  
5:30 P.M.
- WHERE: BRIO TUSCAN GRILLE  
330 YORKTOWN CENTER  
LOMBARD, IL 60148
- TOPIC: EVOLUTION OF LIGHT-  
WEIGHT BLDG. MATERIALS

## PRESIDENT'S MESSAGE

We have been keeping our website up to date. I also want to thank Bill Carey for making sure our website is current. I encourage everyone to visit the Chicago ASPE Chapter site. <http://www.aspechicago.org/>

It is election time and votes for the national officers must be submitted by April 15th. You can view more information regarding the elections on our website. Members should have also received an e-mail notice to vote. If you have not received this your current information on file may need updating.



## Inside this issue:

President's Message	1
Programs-Presenter Bio	2
Canons, Certification	3
February Meeting	3
Member Profiles	4
Member Companies	5

The local elections need to be held between April 1st and April 30th. If you would like to learn more about how to be a part of the Board of Directors or an Officer please contact me with questions: e-mail: [mfitzwater@ccsos.com](mailto:mfitzwater@ccsos.com) or phone 630-678-0808

The March meeting will be on the 20th and held at Brio in Lombard. The speaker will be Miya Russell with USG. The topic is: Evolution of Lightweight Building Materials

The April meeting will be a joint meeting held at Brio in Lombard on the 18th. This will also be the time when our chapter elections will be held. Chicago ASPE Chapters can be present and vote during the meeting or you will be able to vote via e-mail.

Thank you,

Marvin Fitzwater II, CPE

## PROGRAMS-PRESENTER BIO-MIYA RUSSELL

Miya Russell holds a Bachelor of Science degree in Architecture (2005) from the University of Michigan and is a LEED AP. She has been with USG since 2007 as an Architectural Services Representative; responsibilities at USG include design and technical support to the architectural and design community throughout Chicagoland, Central Illinois and Northern Indiana. Prior to joining USG, Miya worked within the Architecture/Interior Design community focusing on K-12 design.



Evolution of Lightweight Building Materials: designed to educate individuals on how and why building materials have changed throughout modern history. The course demonstrates progression of lightweight materials through different architectural building types and building materials. Each piece of architecture discussed is uniquely related to specific building material. Many types of building materials are presented highlighting material weights, sustainability impacts, performance properties, fire resistance, materiality, advantages and disadvantages of each material. This course initially discusses heavier mass materials progressing to lighter weight building materials. The course concludes

### REMEMBERING YOUR CANONS

**CANON #3**— Professional estimators shall conduct themselves in a manner which will promote cooperation and good relations among members of our profession and those directly related to our profession.

### CERTIFICATION

Please contact Bryan Mixer, CPE, for the latest certification news and updates, (312) 242-4171

### CONNECT WITH US ON LINKED IN!!!!

This is our local ASPE group created by Chapter 7 member and CPE Luke Hosty. It's a great way to stay connected with fellow ASPE members and estimators alike!!



February's meeting included discussions on ethics in estimating.

## MEMBER PROFILE-DEREK McLOUGHLIN, CPE



Derek graduated from Napier University in Edinburgh, Scotland with a Degree in Construction and Project Management. Before moving to the US, Derek worked as a Construction Manager for a curtain wall Sub-Contractor in Dublin, Ireland where he managed crews, materials, time and costs at various sites. Shortly after Derek arrived in the US he began his estimating career with the Concord Group in Chicago, his main concentration on divisions 1 thru 14. He has now been there 7 years. Derek received his CPE last year and he also holds the MRICS and PMP credentials.

## MEMBER PROFILE-SEAMUS WALLACE, CPE

Seamus studied at Dublin Institute of Technology, graduating with a B.S in Construction Economics & Management. Before moving to Chicago Seamus worked for Kelly Timber Frame Ltd & Tom Hanafin Construction Ltd as a Junior Quantity Surveyor/ Construction Manager. He moved to Chicago in June 2007 & started working for The Concord Group in January 2008 as a cost estimator.





## Organization

### ASPE-CHICAGO CHAPTER 7

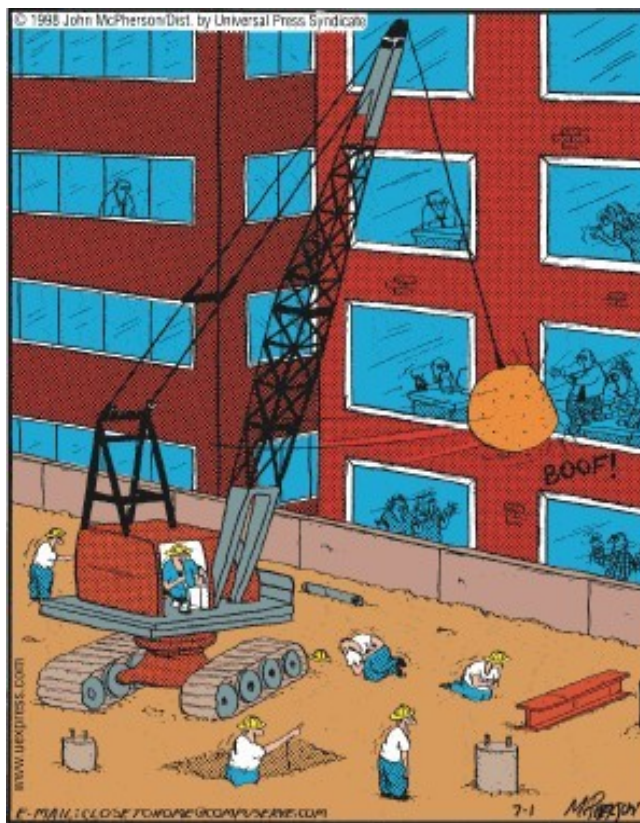
P O Box 6811  
Villa Park, IL 60181

Phone: 630-678-0808  
E-mail: [mfitzwater@ccsos.com](mailto:mfitzwater@ccsos.com)

*“DEDICATED TO THE PROMOTION OF  
THE PROFESSION OF ESTIMATING  
AND TO THE BENEFIT OF THE  
CONSTRUCTION INDUSTRY”*

**WE'RE ON THE WEB!**

[www.aspechicago.org](http://www.aspechicago.org)



The boys down at Witt Construction were having hours of fun with their new Nerf wrecking ball.

## ASPE CHAPTER 7 MEMBER COMPANIES

Aspen Group

Assurance Restoration & Construction

Berglund Construction

CCDS, Inc.

Chicago Metallic Corporation

Construction Cost Systems, Inc.

Custom Contracting, Ltd.

Englewood Construction, Inc.

Estimateur, Inc.

F.H. Paschen/S.N. Nielsen, Inc.

Frontier Construction

GradeBeam, LLC

International Contractors, Inc.

Jaymor Electric, Inc.

John Burns Construction Co.

Krusinski Construction Company

M.A. Mortenson Company

Midwest Grading, Inc.

Oakwood Contractors, Inc.

Pepper Construction Company

Scott Nilsson Davis, LLC.

Specialty Systems, Inc.

STR Consulting LLC

The Concord Group

The Lombard Company

Walsh Construction Company

Wight & Company